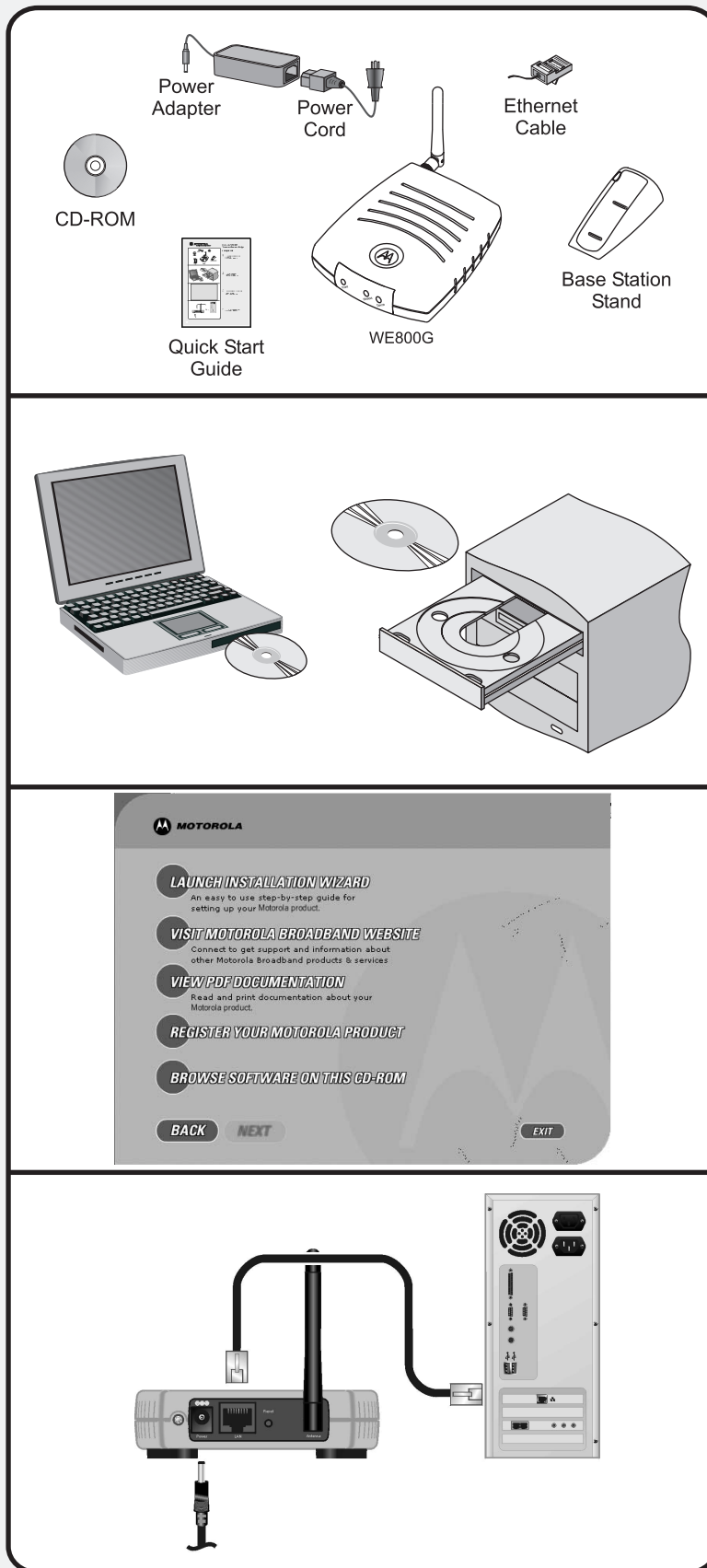




MOTOROLA
intelligence everywhere™

Motorola WE800G Wireless Ethernet Bridge

Getting Started



1 Check that your box contains these items.
(User Guide: Section 1)

2 Insert the Installation Wizard CD-ROM.
(User Guide: Section 2)

3 Install the software for your unit from the CD-ROM.
(User Guide: Section 2)

4 Connect your unit as shown.
(User Guide: Section 2)



506934-001

MGBI

If you need assistance, call:
1-877-466-8646
7 days a week, 24 hours a day
You can also check for the latest developments at:
www.motorola.com/broadband/networking