

## SURFboard® SB4101 Cable Modem

*Broadband Communications Sector*

**MOTOROLA**



# SURFboard® SB4101 Cable Modem LED Status

POWER RECEIVE SEND ONLINE ACTIVITY STANDBY

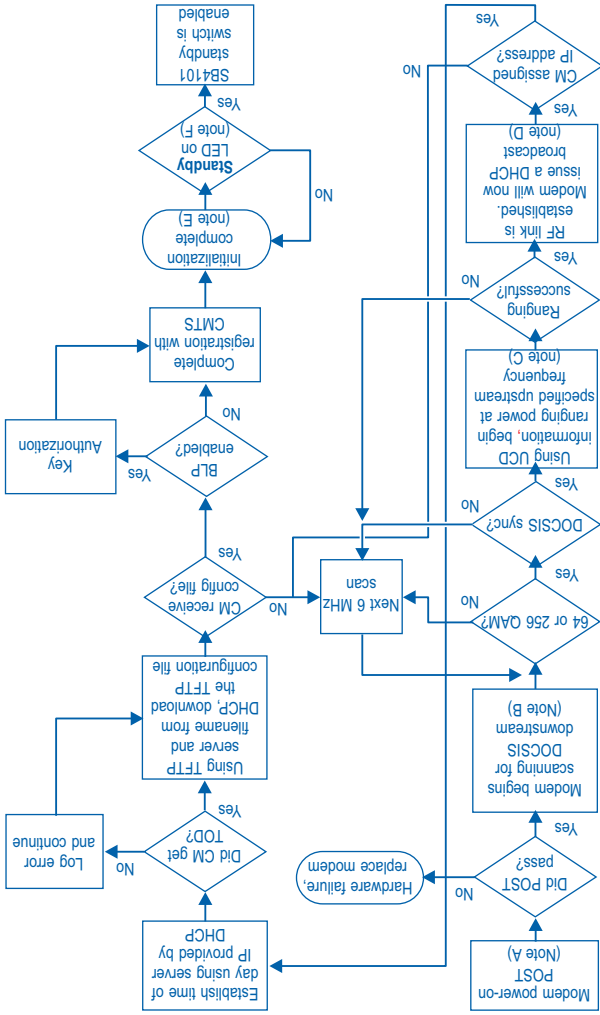
Notes:

	POWER	RECEIVE	SEND	ONLINE	ACTIVITY	STANDBY	
<b>A</b>	●	○	○	○	○	○	Power on
<b>B</b>	●	●	○	○	○	○	Downstream Scan
<b>C</b>	●	●	●	○	○	○	Upstream Range
<b>D</b>	●	●	●	●	○	○	Network Connect
<b>E</b>	●	●	●	●	●	○	Network Activity
<b>F</b>	○	○	○	○	○	●	Standby
<b>G</b>	○	○	○	○	○	○	Power off



- G** Modern powered off.
- F** "Standby" switch enabled. Modem successfully completed boot sequence and all LEDs blink off, except "Standby".
- E** Modem operational. Activity light blinks when transmitting or receiving data.
- D** Downstream and Upstream acquired. Modem processing for DHCP, TFTP, and TOD.
- C** Modem ranging upstream.
- B** Modem scanning downstream frequencies.
- A** Modem Power-on System Test (POST). If LED remains blinking, faulty modem.

Notes:



Modem begins ranging power at 25 dBmV moving up in 6 dBmV steps to maximum of 60 dBmV and then drops down to 8 dBmV and starts over. Range is attempted 3 times.