

SURFboard® SB3100 Cable Modem

Broadband Communications Sector
MOTOROLA



- E** Modem operational. Activity light blinks when transmitting or receiving data.
- D** Downstream and Upstream acquired. Modem processing for DHCP, TFTP, and TOD.
- C** Modem ranging upstream.
- B** Modem scanning downstream frequencies.
- A** Modem Power-on System Test (POST). If LED remains blinking, faulty modem.

Notes:

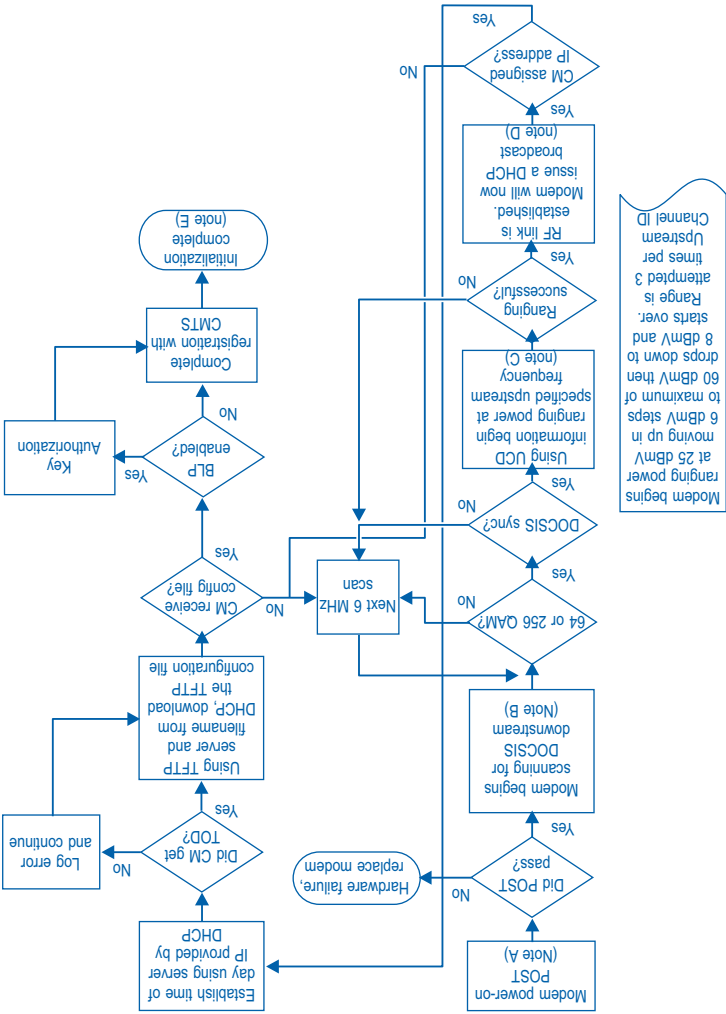
SURFboard® SB3100 Cable Modem LED Status

POWER RECEIVE SEND ONLINE ACTIVITY

Notes:

A	●	○	○	○	○	Power on
B	●	◐	○	○	○	Downstream Scan
C	●	●	◐	○	○	Upstream Range
D	●	●	●	◐	○	Network Connect
E	●	●	●	●	◐	Network Activity

On = ● Off = ○ Flashing = ◐



Modem begins ranging power at 25 dBmV moving up in 6 dBmV steps to maximum of 60 dBmV then drops down to 8 dBmV and starts over. Ranging is attempted 3 times per Upstream Channel ID