

User Manual

Motorola Netopia® 7107-65
Ethernet Gateway

4-port Ethernet, 802.11b/g Wi-Fi



Safety Information

ENGLISH

IMPORTANT SAFETY INSTRUCTIONS – POWER SUPPLY INSTALLATION. Connect the power supply cord to the power jack on the Motorola Gateway. Plug the power supply into an appropriate electrical outlet.

CAUTION: Depending on the power supply provided with the product, either the direct plug-in power supply blades, power supply cord plug or the appliance coupler serves as the mains power disconnect. It is important that the direct plug-in power supply, socket-outlet or appliance coupler be located so it is readily accessible.

(Sweden) Apparaten skall anslutas till jordat uttag när den ansluts till ett nätverk

(Norway) Apparatet må kun tilkoples jordet stikkontakt.

TELECOMMUNICATION INSTALLATION. When using your telephone equipment, basic safety precautions should always be followed to reduce the risk of fire, electric shock and injury to persons, including the following:

- Do not use this product near water, for example, near a bathtub, wash bowl, kitchen sink or laundry tub, in a wet basement or near a swimming pool.
- Avoid using a telephone (other than a cordless type) during an electrical storm. There may be a remote risk of electrical shock from lightning.
- Do not use the telephone to report a gas leak in the vicinity of the leak.

PRODUCT VENTILATION. The Motorola Device is intended for use in a consumer's home. Ambient temperatures around this product should not exceed 104°F (40°C). It should not be used in locations exposed to outside heat radiation or trapping of its own heat. The product should have at least one inch of clearance on all sides except the bottom when properly installed and should not be placed inside tightly enclosed spaces unless proper ventilation is provided.

SAVE THESE INSTRUCTIONS

Motorola Part Number: 556784-002-00

Copyright © 2009 by Motorola, Inc.

All rights reserved. No part of this publication may be reproduced in any form or by any means or used to make any derivative work (such as translation, transformation or adaptation) without written permission from Motorola, Inc.

Motorola reserves the right to revise this publication and to make changes in content from time to time without obligation on the part of Motorola to provide notification of such revision or change. Motorola provides this guide without warranty of any kind, either implied or expressed, including, but not limited to, the implied warranties of merchantability and fitness for a particular purpose. Motorola may make improvements or changes in the product(s) described in this manual at any time. MOTOROLA and the Stylized M Logo are registered in the US Patent & Trademark Office. Microsoft, Windows, Windows Me, and Windows NT are either trademarks or registered trademarks of Microsoft Corporation in the U.S. and/or other countries. Macintosh is a registered trademark of Apple, Inc. Firefox is a registered trademark of the Mozilla Foundation. All other product or service names are the property of their respective owners.

1 Checklist

Thank you for selecting the Motorola Netopia® 7107-65 Wi-Fi Gateway. This guide will help you set up and configure your network.

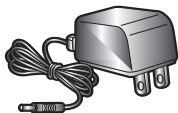
Check your package contents. It should contain the items shown here:



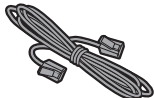
Motorola Gateway



CD and User Manual



Power Supply



1 Gray RJ-45 Ethernet Cable



1 Yellow RJ-45 Ethernet Cable

If you don't have everything, contact your supplier immediately.

2 Connections

1. Decide on a location for the Gateway.

Put the Gateway near a power source, near your DSL or cable modem or fiber-optic media converter, and in a location where air can circulate freely around it.

2. Power the Gateway.

Connect the power supply to the power jack on the back panel of the Gateway. Then, plug the power supply into an electrical outlet. Turn on the Power switch.

The **Power** LED should light solid green.

3. Insert the Motorola Netopia® CD into your CDROM drive.

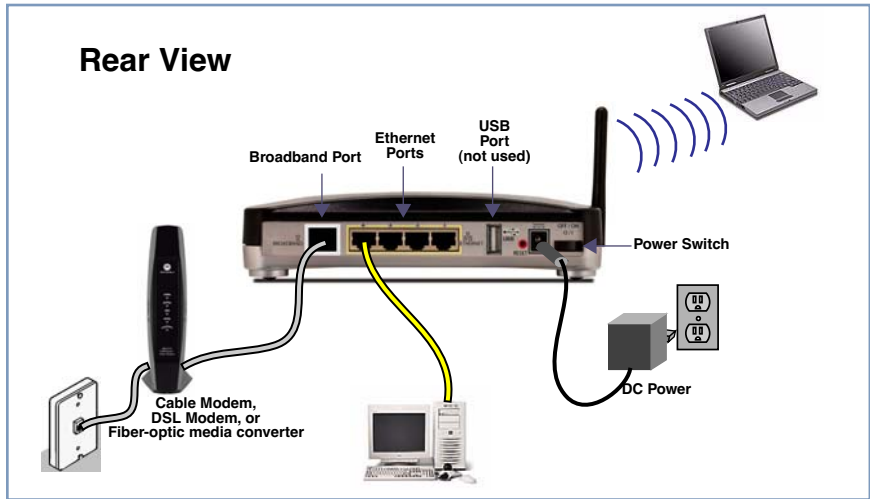
The Motorola Netopia® Installation Guide Wizard automates several tasks to get you up and running easily. These tasks include making the cable connections and configuring the Gateway. Run the Wizard on every computer that will connect to your network.



The Installation Guide Wizard will start automatically and the Welcome screen will appear to step through the process.

Follow the on-screen instructions to make all of your connections.

When all of your connections are made, your network may look like this:



4. Enable Wireless Protected Setup (WPS) on your Wi-Fi devices.

Adding wireless clients to your network is easier using Wireless Protected Setup (WPS). Older, non-WPS clients can still be added to the network by configuring them the standard way with WPA-PSK.

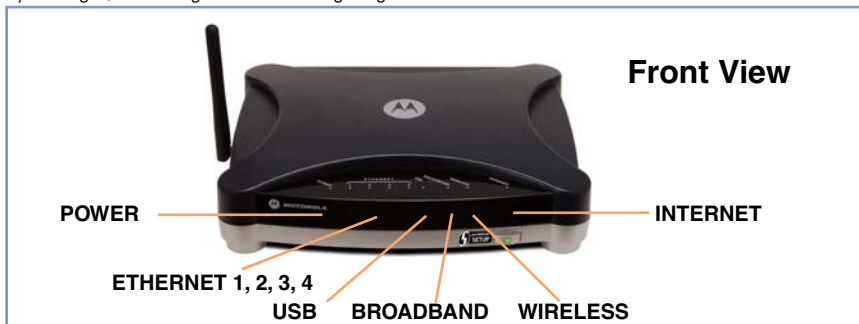
Make sure your wireless clients are running. Press the WPS push-button to begin the exchange, which may last up to two minutes.

Do not power off your Gateway during the exchange.

The Gateway will display a success message when the exchange has completed.

Note: Not all client wireless devices support WPS. Refer to their documentation.

When all of your connections are made, the status LEDs on the front of your Motorola Netopia® Gateway will light, according to the following diagram:

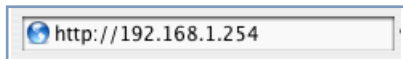


LED	Action
POWER	<i>Green</i> when power is on. <i>Red</i> if device malfunctions. Flashes <i>Red</i> when new embedded software is being installed.
ETHERNET 1, 2, 3, 4	Solid <i>green</i> when connected. Flash <i>green</i> when there is activity on the LAN.
USB	Not currently used.
BROADBAND	Off when not connected to a modem; solid <i>green</i> when a broadband device is detected; flashing <i>green</i> when receiving or transmitting data.
WIRELESS	Flashes <i>green</i> when there is activity on the wireless LAN. Off if driver fails to initialize, or if wireless is disabled.
INTERNET	Solid <i>green</i> when Gateway is connected. Flashes <i>green</i> when transmitting or receiving data on the WAN port.

3 Device Configuration

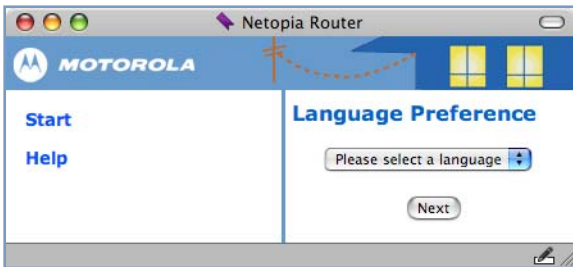
You can access the configuration pages at any time as follows:

1. Run a Web browser, such as Firefox, Safari, or Microsoft Internet Explorer, and enter <http://192.168.1.254> in the URL Address text box.



Press Return.

2. Select your language from the pull-down menu and click [Next](#).



Choices in the Americas are:	Choices in Europe are:
English	English
Español Latinoamericano	Français
Portugués do Brasil	Deutsch
	Italiano

3. For security purposes you must create a password for your Gateway. Enter a new password, repeat it, and click the *Next* button.



You will be asked to log in to your Gateway with a UserName and Password.

The default UserName is **admin**. Enter the Password you just created. Type these in their respective fields and click the *Next* button.

Congratulations! Your connection is up and running and you should be able to browse the Internet by typing a URL address in your browser's Address text box or by selecting any of your favorite bookmarks.

Should you require additional information, page 12 of this Guide contains Frequently Asked Questions (and Answers) and Basic Troubleshooting tips. The latest *Administrator's Handbook* with advanced configuration instructions is also available on-line at:

<http://www.motorola.com/us/products.jsp>

Client Configuration

Your Gateway serves Dynamically-assigned IP addresses by default. Be sure to configure each computer connected to your Gateway to accept a Dynamically-assigned IP address, commonly referred to as DHCP.

Microsoft Windows:

Step 1. Navigate to the *TCP/IP Properties* Control Panel.

a. Windows 98, 2000, and ME versions follow a path like this:

Start menu -> **Settings** -> **Control Panel** -> **Network** (or **Network and Dial-up Connections** -> **Local Area Connection** -> **Properties**) -> **TCP/IP** [your_network_card] or **Internet Protocol [TCP/IP]** -> **Properties**

b. Windows XP follows a path like this:

Start menu -> **Control Panel** -> **Network and Internet Connections** -> **Network Connections** -> **Local Area Connection** -> **Properties** -> **Internet Protocol [TCP/IP]** -> **Properties**

Step 2. Select *Obtain an IP address automatically*.

Step 3. Select *Obtain DNS server address automatically*, if available.

Step 4. Remove any previously configured Gateways, if available.

Step 5. OK the settings. Restart if prompted.



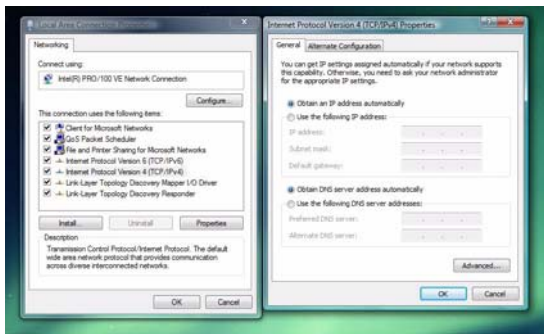
c. Windows Vista is set to obtain an IP address automatically by default. You may not need to configure it at all.

To check, open the **Networking** Control Panel and select **Internet Protocol Version 4 (TCP/IPv4)**. Click the **Properties** button.

ENGLISH

The **Internet Protocol Version 4 (TCP/IPv4) Properties** window should appear as shown.

If not, select the radio buttons shown above, and click the **OK** button.



Macintosh Mac OS 9 or Mac OS X:

Step 1. Access the *TCP/IP* or *Network* control panel.

a. Mac OS 9 follows a path like this:

Apple Menu -> **Control Panels** -> **TCP/IP** Control Panel

b. Mac OS X follows a path like this:

Apple Menu -> **System Preferences** -> **Network**

Step 2. Select *Built-in Ethernet*

Step 3. Select *Configure Using DHCP*

Step 4. Close and Save, if prompted.



Q: Why is my BROADBAND light flashing green?

A: A flashing green light indicates that no cable is attached to the BROADBAND port or that the Motorola Netopia® Gateway is negotiating a connection. A solid green BROADBAND light indicates that an internet connection is established.

If your BROADBAND light does not become solid green, verify that the connection from the Motorola Netopia® Gateway's BROADBAND port to your cable or DSL modem jack is secure.

Q: I forgot my password, how can I access my Motorola Netopia® Gateway?

A: If you don't have a password, the only way to access the Motorola Gateway is the following: Referring to the following diagram, find the round Reset Switch opening.

Factory Reset Switch



Carefully insert the point of a pen or an unwound paperclip into the opening.

- If you press the factory default button for less than 1/2 a second, the unit will continue to run as normal.
- If you press the factory default button for more than 15 seconds, when you release it, the Gateway will perform

a factory reset, clear all settings and configurations, and reboot.

Note: To assure the Motorola Netopia® Gateway factory defaults you **MUST** hold the reset switch for more than 15 seconds. When you release it, the Gateway will perform a factory reset, clear all setting and configurations, and reboot. Keep in mind that all of your settings will need to be reconfigured.

Q: What is the default IP address of my Motorola Netopia® Gateway?

A: The default IP address of the Motorola Netopia® Gateway is 192.168.1.254. You may access the WebUI configuration pages by typing <http://192.168.1.254> URL into your browser.

Q: I made some configuration changes in my Motorola Netopia® Gateway and the changes have not taken effect.

A: Any configuration changes made to the Motorola Netopia® Gateway require a save and restart before they take effect.

Q: How do I access the configuration screens of my Motorola Netopia® Gateway?

A: You may access your Motorola Netopia® Gateway by typing the following into your web browser **<http://192.168.1.254>**.

Note: By default, your Motorola Netopia® Gateway has an Ethernet IP Address of **192.168.1.254**.

Q: What is the default user name and password of the Motorola Netopia® Gateway?

A: The default User Name is **Admin**. Motorola Netopia® Gateways are not distributed with a default password. Upon initial configuration, the Gateway requires a new password to be set.

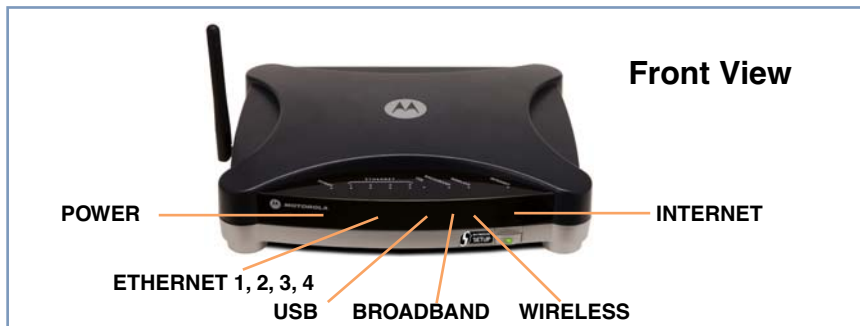
Basic Troubleshooting

This section gives some simple suggestions for troubleshooting problems with your Gateway's initial configuration.

Before troubleshooting, make sure you have

- plugged in all the necessary cables; and
- set your PC's TCP/IP controls to obtain an IP address automatically.

The first step in troubleshooting is to check the status indicator lights (LEDs) in the order outlined below.



LED Function Summary

	Power	Broadband	Internet
Unlit	No power	Not connected	Not connected
Solid Green	Power on	Connected to a broadband device.	Connected to the Internet
Flashing Green	N/A	Transmitting or receiving data on the WAN port	Transmitting or receiving data on the WAN port
Solid Red	System malfunction	N/A	N/A
Flashing Red	Updating embedded software	N/A	N/A

	Ethernet 1, 2, 3, 4	Wireless
Unlit	No signal	No wireless signal
Solid Green	Synched with Ethernet card	N/A
Flashing Green	Activity on the Ethernet cable	Activity on the wireless LAN
Solid Red	N/A	N/A
Flashing Red	N/A	N/A

If a status indicator light does not look correct, look for these possible problems:

If LED is not Lit	Possible problems
Power	<ul style="list-style-type: none">• Make sure the power switch is in the ON position.• Make sure the power adapter is plugged into the Gateway properly.• Try a known good wall outlet.• Replace the power supply and/or unit.
Broadband	<ul style="list-style-type: none">• Make sure the gray Ethernet cable is plugged into the correct port on your DSL or cable modem.• Make sure the gray Ethernet cable is plugged into the BROADBAND port on your Gateway.• Make sure your broadband account has been activated by your service provider.• Make sure your Gateway is not plugged into a micro filter.
Ethernet 1,2,3,4	<ul style="list-style-type: none">• Make sure the Ethernet cable is securely plugged into the Ethernet jack on the PC.• Make sure the Ethernet cable is securely plugged into the Ethernet port on your Gateway.• Try another Ethernet cable if you have one available.• Make sure you have Ethernet drivers installed on the PC.• Make sure the PC's TCP/IP Properties for the Ethernet Network Control Panel is set to obtain an IP address via DHCP.• Make sure the PC has obtained an address in the 192.168.1.x range. (You may have changed the subnet addressing.)• Make sure the PC is configured to access the Internet over a LAN.• Disable any installed network devices (Ethernet, HomePNA, wireless) that are not being used to connect to your Gateway.

Support

Answers to many frequently asked product-related questions, as well as full product documentation with advanced configuration instructions, are also available on-line at:

<http://www.motorola.com/us/products.jsp>

Note the serial number (**SN:**) of your Gateway. It is located on the label on the bottom of the Gateway below the model number. You will need the Gateway's serial number if you need to call for technical support.

Caring for the Environment by Recycling

When you see this symbol on a Motorola product, do not dispose of the product with residential or commercial waste.



Recycling your Motorola Equipment

Please do not dispose of this product with your residential or commercial waste. Some countries or regions, such as the European Union, have set up systems to collect and recycle electrical and electronic waste items.

Contact your local authorities for information about practices established for your region. If collection systems are not available, call Motorola Customer Service for assistance.

Please visit www.motorola.com/recycle
<<http://www.motorola.com/recycle>> for instructions on recycling.

Beskyttelse af miljøet med genbrug

Når du ser dette symbol på et Motorola-produkt, må produktet ikke bortskaffes sammen med husholdningsaffald eller erhvervsaffald.

Umweltschutz durch Recycling

Wenn Sie dieses Zeichen auf einem Produkt von Motorola sehen, entsorgen Sie das Produkt bitte nicht als gewöhnlichen Hausoder Büromüll.

Genbrug af dit Motorola-udstyr

Dette produkt må ikke bortskaffes sammen med husholdningsaffald eller erhvervsaffald. Nogle lande eller områder, f.eks. EU, har oprettet systemer til indsamling og genbrug af elektriske og elektroniske affaldsprodukter. Kontakt de lokale myndigheder for oplysninger om gældende fremgangsmåder i dit område. Hvis der ikke findes tilgængelige indsamlingssystemer, kan du kontakte Motorola Kundeservice.

Recycling bei Geräten von Motorola

Bitte entsorgen Sie dieses Produkt nicht als gewöhnlichen Haus- oder Büromüll. In einigen Ländern und Gebieten, z. B. in der Europäischen Union, wurden Systeme für die Rücknahme und Wiederverwertung von Elektroschrott eingeführt. Erkundigen Sie sich bitte bei Ihrer Stadtoder Kreisverwaltung nach der geltenden Entsorgungspraxis. Falls bei Ihnen noch kein Abfuhroder Rücknahmesystem besteht, wenden Sie sich bitte an den Kundendienst von Motorola.

Cuidar el medio ambiente mediante el reciclaje

Cuando vea este símbolo en un producto Motorola, no lo deseche junto con residuos residenciales o comerciales.

Recyclage pour le respect de l'environnement

Lorsque vous voyez ce symbole sur un produit Motorola, ne le jetez pas avec vos ordures ménagères ou vos rebus d'entreprise.

Reciclaje de su equipo Motorola

No deseche este producto junto con sus residuos residenciales o comerciales. Algunos países o regiones, tales como la Unión Europea, han organizado sistemas para recoger y reciclar desechos eléctricos y electrónicos. Comuníquese con las autoridades locales para obtener información acerca de las prácticas vigentes en su región. Si no existen sistemas de recolección disponibles, solicite asistencia llamando el Servicio al Cliente de Motorola.

Recyclage de votre équipement Motorola

Veillez ne pas jeter ce produit avec vos ordures ménagères ou vos rebus d'entreprise. Certains pays ou certaines régions comme l'Union Européenne ont mis en place des systèmes de collecte et de recyclage des produits électriques et électroniques mis au rebut. Veuillez contacter vos autorités locales pour vous informer des pratiques instaurées dans votre région. Si aucun système de collecte n'est disponible, veuillez appeler le Service clientèle de Motorola qui vous apportera son assistance.

Milieubewust recycleren

Als u dit symbool op een Motorola-product ziet, gooi het dan niet bij het huishoudelijk afval of het bedrijfsafval.

Dbąłość o środowisko - recykling

Produktów Motorola oznaczonych tym symbolem nie należy wyrzucać do komunalnych pojemników na śmieci.

Uw Motorola-materiaal recycleren.

Gooi dit product niet bij het huishoudelijk afval het of bedrijfsafval. In sommige landen of regio's zoals de Europese Unie, zijn er bepaalde systemen om elektrische of elektronische afvalproducten in te zamelen en te recycleren. Neem contact op met de plaatselijke overheid voor informatie over de geldende regels in uw regio. Indien er geen systemen bestaan, neemt u contact op met de klantendienst van Motorola.

Recykling posiadanego sprzętu Motorola

Produktu nie należy wyrzucać do komunalnych pojemników na śmieci. W niektórych krajach i regionach, np. w Unii Europejskiej, istnieją systemy zbierania i recyklingu sprzętu elektrycznego i elektronicznego. Informacje o utylizacji tego rodzaju odpadów należy uzyskać od władz lokalnych. Jeśli w danym regionie nie istnieją systemy zbierania odpadów elektrycznych i elektronicznych, informacje o utylizacji należy uzyskać od biura obsługi klienta firmy Motorola (Motorola Customer Service).

Cuidando do meio ambiente através da reciclagem

Quando você ver este símbolo em um produto Motorola, não descarte o produto junto com lixo residencial ou comercial.

ente da Motorola para obter assistência.

Var rädd om miljön genom återvinning

När du ser den här symbolen på en av Motorolas produkter ska du inte kasta produkten tillsammans med det vanliga avfallet.

Reciclagem do seu equipamento Motorola

Não descarte este produto junto com o lixo residencial ou comercial. Alguns países ou regiões, tais como a União Européia, criaram sistemas para coleccionar e reciclar produtos eletroeletrônicos. Para obter informações sobre as práticas estabelecidas para sua região, entre em contato com as autoridades locais. Se não houver sistemas de coleta disponíveis, entre em contato com o Serviço ao Cli-

Återvinning av din Motorola-utrustning

Kasta inte denna produkt tillsammans med det vanliga avfallet. Vissa länder eller regioner, som t.ex. EU, har satt upp ett system för insamling och återvinning av el- och elektronikavfall. Kontakta dina lokala myndigheter för information om vilka regler som gäller i din region. Om det inte finns något insamlingsystem ska du kontakta Motorolas kundtjänst för hjälp.

